

Alliance Theatre

institute

**Study Guide:
The Wizard of Oz
4th-8th Grades**

Created as part of the Alliance Theatre's Dramaturgy by Students program
by: Barry Stewart Mann, Teaching Artist
with: students at The Friends School of Atlanta
and their educator: Ms. Amy Lighthill



Written by L. Frank Baum
Music and lyrics by Harold Arlen and E.Y. Harburg
Book adaptation by John Kane
Directed by Rosemary Newcott

March 9 – April 14, 2019
Rich Theatre, Woodruff Arts Center

TABLE OF CONTENTS

Pre- and Post-Show Questions _____	pg. 3
About the Director _____	pg. 4
Curriculum Standards _____	pg. 5
Synopsis _____	pg. 5
About the Author _____	pg. 6
About the Film _____	pg. 6
• Fun Film Facts _____	pg. 7
• <i>The Wizard of Oz</i> Time Line _____	pg. 8
Character Profiles on <i>Oztagramchatbook</i> _____	pg. 9
Folk Art _____	pg. 10
Themes	
• (There's No Place Like) Home _____	pg. 11
• (Somewhere Over the) Rainbow _____	pg. 12
• The Hero's Journey (a Debate) _____	pgs. 13-14
STEAM Connections _____	pgs. 15-16
Vocabulary _____	pg. 17
Fun'n'Games	
• Word Search _____	pg. 18
• Riddles _____	pg. 19
• Oz Maze _____	pg. 19
• <i>Wizard of Oz</i> Mad Lib _____	pg. 20
• Riddle Answers _____	pg. 20
Resources _____	pg. 21
The Junior Dramaturgs of the Friends School of Atlanta _____	pg. 21



PRE- AND POST-SHOW QUESTIONS:

Pre-Show Questions:

- Have you ever had to go on a long journey to get somewhere special or to get help from someone special? How and when? Did you get there, and did you get the help?
- What are dreams? Why do we dream when we sleep? What purposes do dreams serve?
- How can a play's design elements (i.e. set, costumes, music, etc.) impact the telling of the story?

Post-Show Questions:

- What might the characters, settings and elements of this story represent?
- Throughout the play, Dorothy wants to go home. At the end, Glinda tells her, "You've always had the power to go back to Kansas." In what ways, and to what extent, do we have the power within us to achieve the goals we set for ourselves?
- How did the incorporation of folk art enhance the costumes, set, music, etc.?



CURRICULUM STANDARDS:

Language Arts Standards

- ELAGSERL3.** Describe how a particular story's or drama's plot unfolds in a series of episodes as well as how the characters respond or change as the plot moves towards a resolution.
- ELAGSERL9.** Compare and contrast texts in different forms or genres (e.g., stories and poems; historical novels and fantasy stories) in terms of their approaches to similar themes and topics.
- ELAGSESL2.** Interpret information presented in diverse media and formats (e.g., visually, quantitatively, orally) and explain how it contributes to a topic, text, or issue under study.

Theatre Standards (GPS)

- TA.RE.1.** Engage actively and appropriately as an audience member.
- TA.RE.2.** Critique various aspects of theatre and other media.
- TA.CN.1.** Explore how theatre connects to life experiences, careers, and other content.
- TA.CN.2.** Examine the role of theatre in a societal, cultural and historical context.

THE WIZARD OF OZ SYNOPSIS (well, Teaser!)

The trouble all starts after Dorothy's dog, Toto, bites the malicious Miss Gulch one day on their walk home. She threatens Dorothy by telling her that she'll take Toto to the sheriff as an act of public service, and have him *destroyed*. Dorothy pleads to her Auntie Em and Uncle Henry that Toto isn't a bad dog, but they know they have to side with the rules, because if they don't, Miss Gulch will take a damage suit for their whole farm. In Miss Gulch's mind's eye, she got bit by a dog, which she considers to be a "vicious act." Aunt Em tells Dorothy, "You need to find some place where there isn't any trouble that you can run into, Dorothy, honestly." *Somewhere where there isn't any trouble*, Dorothy thinks to herself. *Somewhere over the rainbow then, maybe. Just maybe.*

A dreadful twister then strikes, whisking her and Toto away into The Land of Oz, where the Wizard of Oz is the ruler of the Emerald City. Along the way to her destination to see the Wizard, she meets a Scarecrow, a Tinman, and a Lion. The Scarecrow wishes for a brain, the Tinman wishes for a heart, and the Lion wishes for courage, and, last of them all, Dorothy wishes to go home to Kansas. Back home in Kansas, everything could be normal, everyday life again, even if she has friends who love her in Oz like the Lion, the Tinman, and the Scarecrow.

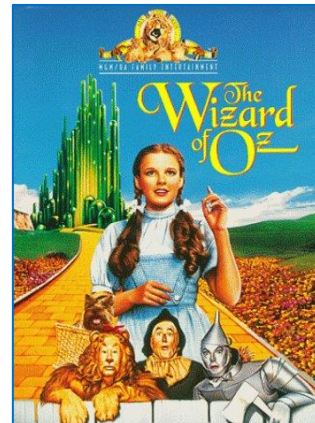
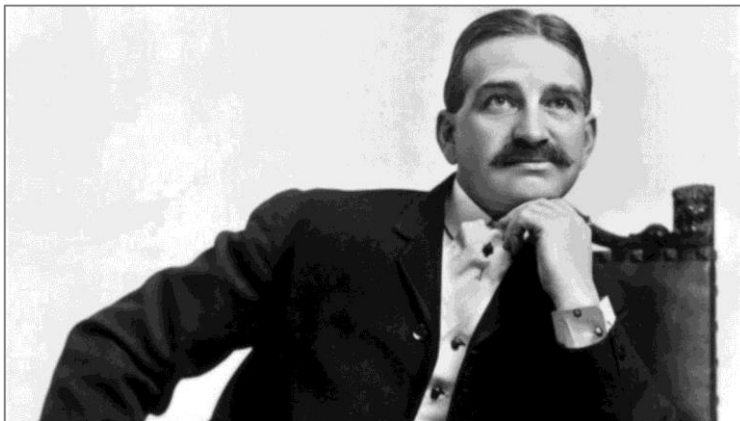
Will they all get what they desire? Or will they fail, even after they travel such a long way to get it? What will happen?

*Have you read or seen The Wizard of Oz before?
If so, did it end the way you expected?
If not, based on this introduction, what do you think will happen?*

ABOUT THE AUTHOR: L. Frank Baum

Lyman Frank Baum was born in New York on May 15, 1836. At a young age, he had a weak heart and often was absent from school. This gave him time to read, write, and use his imagination. He became a businessman and journalist, but he also loved theatre and acting. He wrote many plays. He got married to Maud Gage, whose mother was a famous suffragette, and he was also a big supporter of women's suffrage (the right to vote). Baum was an amazing storyteller, and he loved to tell stories to his four sons. One day, someone told him that his stories were so good that he should start writing them down. That is how he started writing children's books. In 1900, when he was 44 years old, *The Wonderful Wizard of Oz* got published.

There were many things in his life that influenced the book. For example, Dorothy was named after his niece who died at age five, and Glinda the Good Witch was named after his mother-in-law, who was an important part of his life. Baum wrote a whole series for the Land of Oz. In the early days of Oz (before the movies), Baum decided to create a play based around the book. The play was a huge success, but Baum decided to make changes to the script, which included removing Toto! He said that it was too hard to have a trained dog perform live and still get everything right the first time. Instead of Toto, Baum decided to replace him with a cow named Imogene. Baum died in Hollywood, California, on May 6, 1919. Twenty years after his death, his book was made into one of the most famous movies of all time.



ABOUT THE FILM:

The Wizard of Oz is a 1939 American musical fantasy film produced by MGM. It is widely considered to be one of the greatest films in cinema history. It is based on the book *The Wonderful Wizard of Oz*, although most people don't know the book even exists. The movie, legendary for its use of Technicolor, fantasy storytelling, musical score and memorable characters, has become an icon of American pop culture. It was nominated for 6 Academy Awards, including Best Picture, but lost to *Gone with the Wind*. It did win in two other categories: Best Original Song for "Over the Rainbow" and Best Original Score. Though the film was a huge success, the filmmakers didn't make a profit until the 1949 re-release. At the time, it was the most expensive movie ever made. Also, the 1939 *Wizard of Oz* wasn't the first movie adaptation. A silent film adaptation was made in 1925, but it wasn't nearly as successful or popular.

Fun Film Facts:



Judy Garland (Dorothy) was only paid \$500 a day, while Ray Bolger (Scarecrow) and Jack Haley (Tin Man) received \$3,000 (the equivalent of \$52,000 now because of inflation). Terry the dog (Toto) earned \$125 a week while the actors playing the Munchkins only earned \$50 a week.

At first, there was supposed to be a different actor to play the Tin Man, but after nine days of filming, they realized he was allergic to the makeup and was unable to breathe.

During the filming, Toto got stepped on, and while she recovered, a doggie double filled her role.

While filming the Wicked Witch's fiery exit from Munchkinland, Margaret Hamilton suffered second-degree burns on her face and third-degree burns on her right hand

when the special-effect flames shot up before she had gone through a trapdoor. She was in the hospital for six weeks, and even after she returned to work, she wore green gloves to hide the fact her hand had not fully healed.

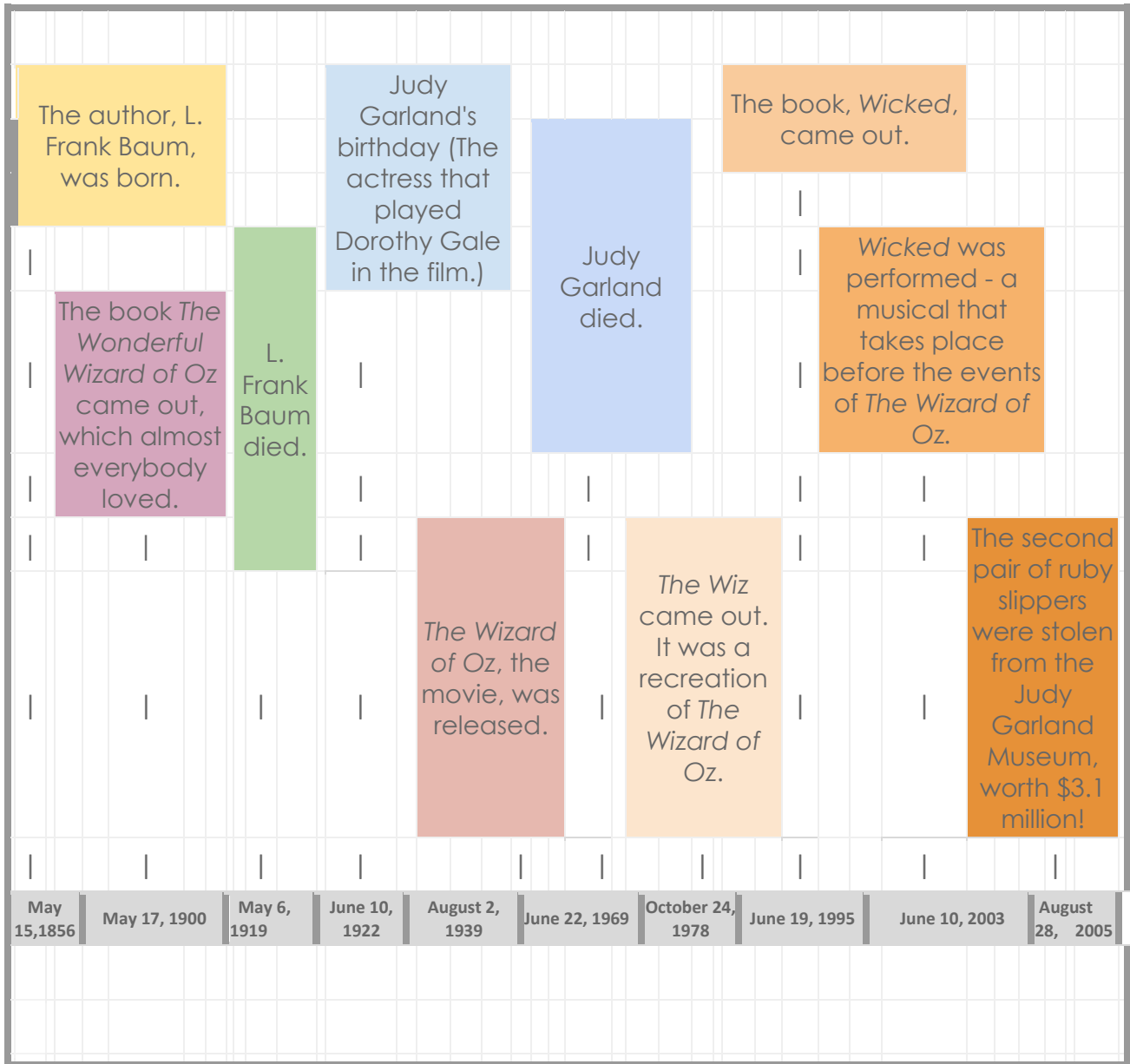
In an early draft of the script, some of the writers were going to give the Wicked Witch of the West a son named Bulbo, who was going to rule Oz.

The director only put the Wicked Witch of the West in for only a couple of scenes because he thought the audience would think she was too scary.

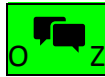
In the book, the slippers were silver, but they were changed to ruby for the movie because the director thought it would look better in Technicolor.



THE WIZARD OF OZ TIMELINE:



PROFILES ON 'OZTAGRAMCHATBOOK':



Dorothy Gale

Personality: Sweet, nice
Appearance: White dress, blue apron, brown hair, braids
Goal: To get back to Kansas, to protect Toto
Likes: Meeting new people
Dislikes: Bullying
Famous Saying: "Toto, I have a feeling we're not in Kansas anymore."



Scarecrow

Personality: Brainless, old, nice
Appearance: Straw, straw, straw, straw, dirt
Goal: To get a brain
Likes: To talk and sing
Dislikes: Fire, hanging out
Famous Saying: "Some people without brains do an awful lot of talking, don't they?"



Tin Man

Personality: Logical, heartless
Appearance: Metal, silver, rusty (sometimes)
Goal: To get a heart
Likes: Dancing, singing, kindness, chopping wood
Dislikes: Rain, rust
Famous Saying: "Hearts will never be practical until they can be made unbreakable."



Lion

Personality: Very scared, passive-aggressive
Appearance: Very furry
Goal: To get some courage
Likes: Sing and dance
Dislikes: Scary things
Famous Saying: "You're right, I am a coward! I haven't any courage at all. I even scare myself."



Toto

Personality: Brave, courageous, cighty
Appearance: Cairn Terrier
Goal: To have a day of just napping
Likes: Dorothy, fields of poppies, naps, walks, treats
Dislikes: The yellow brick road, getting carried all the time
Famous Saying: "Bark, woof, howl, woof, woof, bark."



Glinda, the Good Witch

Personality: Nice, caring, Helpful
Appearance: Pink, glittery, elegant
Goal: To watch over everyone in Oz
Likes: Dorothy, kindness, Munchkins
Dislikes: Wicked Witches, meanness
Famous Sayings: "Are you a Good Witch or a Bad Witch?" and "You had the power all along, my dear."



Wicked Witch of the West

Personality: Mean, suspicious, jealous
Appearance: Green, black hat and cloak
Goal: To get the ruby slippers
Likes: Setting things on fire, her flying monkeys
Dislikes: Dorothy and anyone who helps her
Famous Saying: "I will get you, my pretty, and your little dog too!"



Wicked Witch of the East

Personality: Wicked, mean, ugly
Appearance: Red ruby shoes, striped socks
Goal: To become 3-dimensional again
Likes: Setting houses on fire
Dislikes: Getting trapped under houses
Famous Saying: "-----"

FOLK ART:

The design of the Alliance Theatre’s production of *The Wizard of Oz* is inspired by Folk Art. What is Folk Art? It is defined as art that originates among the common people of a region or nation and reflects their traditional culture, especially involving every day or festive items. It is produced or decorated by artists who have not received formal training. The artists are self-taught, and their work comes from their own vision and creativity.

Famous Folk Artists include Grandma Moses, Howard Finster, Charlie Lucas, Mattie Lou O’Kelley, Dilmus Hall, and Bill Traylor. See below for three examples of Folk Art found at the High Museum of Art, across the plaza from the Alliance Theatre at the Woodruff Arts Center.



High Museum of Art, Atlanta
Gregory Warmack (*Mr. Imagination*), American, 1948-2012
Horse, 2009
Mixed media
Purchase with the Folk Art Acquisition Fund, 2011.120



High Museum of Art, Atlanta
Howard Finster, American, 1916-2001
Howard on a Mule, ca. 1976
Enamel on wood
Purchase with funds from the Cousins Foundation, Inc., and donors to the Paradise Project Campaign, 1994.205
© Howard Finster/Artists Rights Society (ARS), New York



High Museum of Art, Atlanta
Nellie Mae Rowe, American, 1900-1982
Nellie and Judith's Houses, 1980
Crayon, gouache, ink, and graphite on paper
Gift of Judith Alexander, 2003.209



THEME: (THERE'S NO PLACE LIKE) HOME

The Wizard of Oz begins and ends at home. Dorothy runs away from home at the start, but she returns home with joy after her adventures in Oz. She says “there’s no place like home” but is this really true? Sometimes, home could be the best place to be, but at other times, it could feel like being the only one on another planet.

Home can feel just right. It feels safe inside your home. Time at home is relaxed and creative. You can watch YouTube videos in bed, dance, draw, and listen to music. We all love being held in the closeness of our family life. Home is where my guinea pig lives and where my cat comes to get food. I feel safe and loved at home, unlike the real world. It’s a place where you feel that you cannot be judged; you feel welcome. With family, fears and worries melt away in a moment.

But home can also feel scary. For some people, home is a place where they feel unsafe and creeped out. A house can be haunted - not with ghosts but with sad memories.

Everyone’s view of home is different. Some people have a home that they return to every day. Others might not have a home to return to. Some people in other countries have to learn to leave home due to violence. So the theme “there’s no place like home” is an opinion. Home can be both a safe haven and a place fraught with insecurity or even danger; *The Wizard of Oz* helps reconnect us with that simple happiness.

*What does home mean to you?
Do you have one home or multiple homes?
Do you agree or disagree that “There’s No Place Like Home?”*



THEME: (SOMEWHERE OVER THE) RAINBOW

In *The Wizard of Oz*, Aunt Em tells Dorothy to “find yourself a place where you won’t get into any trouble.” Dorothy wonders where that could be and imagines a place where “skies are blue” and “troubles melt like lemon drops away above the chimney tops.” In 2019, we might imagine it a little differently – here are some of the things we hope to find there.

Somewhere over the rainbow . . .

- . . . everyone is smart even without school . . .
- . . . there are sweet potatoes, dolphins, flowers, and no bugs . . .
- . . . everyone has a real sense of style . . .
- . . . there are koalas, videogames, red velvet cake, and sports . . .
- . . . everyone is equal, and there are infinite trees to climb . . .
- . . . there is time for plenty of sleep . . .
- . . . everyone drinks milk shakes with lots of whipped cream . . .
- . . . animal abuse will stop . . .
- . . . there’s no stress about anything . . .

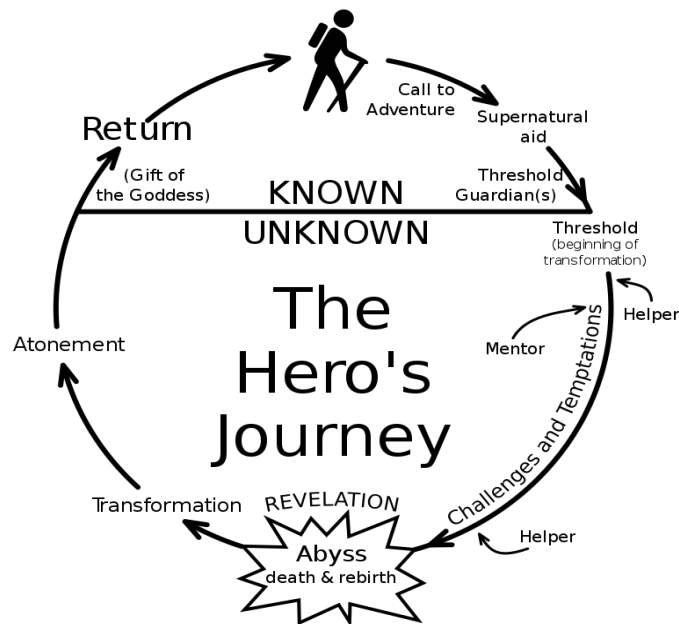
The rainbow can be a portal to a new place, an ending of something hard. We also know that the rainbow is a trick of the light. We can’t really trust a rainbow because it is not sentient or physical; it can’t breathe. It is light reflecting in the water, which means it can’t be grabbed. However, if the things over the rainbow don’t come true, we can find things that are similar and make the most of them.

What do you hope to find over the rainbow?

How do you balance chasing your hopes and dreams but knowing they might not all come true?

THEME: THE HERO'S JOURNEY – A DEBATE

Is Dorothy a Hero? Is her adventure in Oz a classical "Hero's Journey?" The Junior Dramaturgs debate each side of the argument.



PRO: Yes, she's totally a hero because the whole thing happens because she is saving her dog from the mean neighbor.

CON: No, she doesn't do anything big enough to be called a hero.

PRO: It's her leadership and bravery that gets the Tinman his heart, the Scarecrow his brain, and the Lion his courage.

CON: That doesn't make her a hero! For the Lion, Tin Man, and Scarecrow, she's a friend, not a hero.

PRO: When her friends are scared, she stands up. She faces the challenge of getting the witch's broom.

CON: She is always the same with the witch; she never gets over her. After she accidentally kills the first witch, she is willing to give up the slippers; they force her into a role she doesn't want to take on.

PRO: Her call to adventure is when she goes on the Yellow Brick Road. And a Hero has a mentor - Dorothy's is Glinda, the Good Witch.

CON: But Glinda doesn't help Dorothy the whole time.



PRO: Glinda makes sure she figures things out herself. That's what some mentors do.

CON: Yeah, but Dorothy makes some foolish choices, like falling asleep in the poppies.

PRO: She goes through the death and rebirth part twice - when she's locked up in the witch's castle, and again when the Wizard flies away in the hot air balloon without her.

CON: She put her faith in someone who is a fake.

PRO: Also, she goes through the atonement stage. She feels bad for causing Aunt Em sadness. She also learns that "there's no place like home."

CON: She just wants to get home. And sometimes she acts like there's no hope, that doesn't help.

PRO: She is transformed through the story. She acts more grown up.

CON: Really, it depends on perspective. The Munchkins think she's a hero because she kills the Wicked Witch that enslaved them. For the other Witch, Dorothy's not a Hero because Dorothy killed her sister.

What do you think? Is Dorothy a Hero? Is her adventure a "Hero's Journey"?

STEAM CONNECTIONS:

Tornadoes

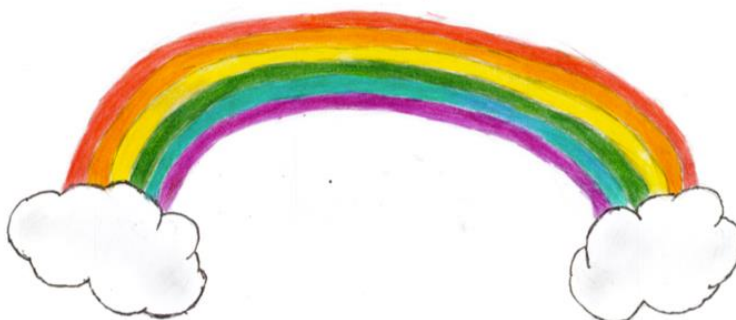


A tornado is a violent rotating column of air that extends downward from a thunderstorm to the ground. The most violent tornadoes have winds of up to 300 mph and can cause tremendous destruction. They can level buildings, uproot trees, and toss vehicles through the air. A tornado can leave a path more than a mile wide and up to 50 miles long. In an average year, over 800 tornadoes are reported across the United States. Tornadoes are also known as twisters or cyclones; in meteorology, the term 'cyclone' is used more broadly to refer to any closed low pressure circulation. A waterspout is a weaker tornado that forms over water. Tornadoes occur all over the world but are prevalent in the United States. Specifically, the combination of the Rocky Mountains to the west and the Gulf of Mexico to the south make the Central Plains of the Midwestern United States a prime region for the formation of tornadoes. It is for this reason that the area, including Kansas, is referred to as 'Tornado Alley.'

Rainbows

A rainbow is a multicolored arc that is created by light striking droplets of water in the atmosphere. The most common type occurs when sunlight strikes raindrops that are being viewed from a precise angle of 42 degrees. A rainbow doesn't really exist in a particular place; it is an illusion that depends on where a viewer is in relation to a light source. Usually, the light source is behind the viewer.

Rainbows are the result of the refraction and reflection of light. A rainbow shows up as a spectrum of light. White light is how our eyes see all the colors of the rainbow mixed together. That's why sunlight appears white. When sunlight hits a rain droplet, some of the light is reflected. The spectrum includes light with many different wavelengths, and each is reflected at a different angle. When the droplets of water reflect the light, they separate out the spectrum and create a rainbow.



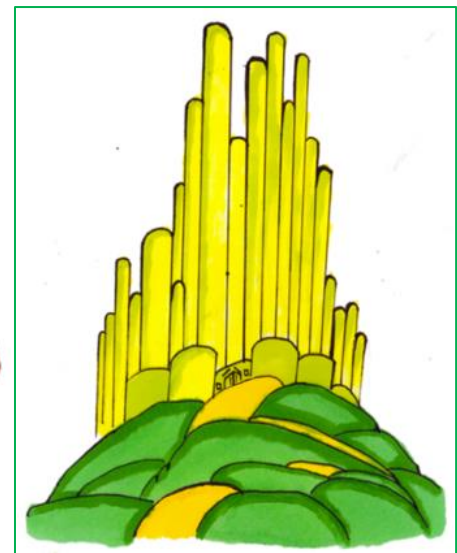
Poppies

Since ancient times, poppies have been known to be the source of opium, a milky substance produced in their seed pods. Opium is one of the world's oldest medicines. It has been used to relieve pain and to help people sleep. In a time before synthetic medicines, opium made up an important part of the collection of available drugs. It was used in a variety of forms, including laudanum, which is a solution of opium in alcohol. L. Frank Baum grew up as a sickly child so he was probably treated with laudanum and knew how it could put people to sleep.

Emeralds and Rubies

In both rubies and emeralds, the color of the gem comes from impurities in the base mineral. A ruby is a crystal called corundum that is formed mostly of aluminum oxide, but chromium impurities that are less than 1% of the stone's composition give it its redness. The chromium impurities absorb specific colors of light so in rubies, the chromium is only letting red light pass through the stone. If a corundum has other elements in it, they can cause it to be different colors, like blue or yellow. Then, it's called a sapphire.

Chromium impurities are also the color source in emeralds. There's crystal called beryl that has silica, aluminum, and beryllium in it. These elements act in the emerald in the same way that the chromium acts in the ruby, absorbing certain colors. But they let the green through, giving emeralds their color.



Other STEAM Connections to Explore:

- What causes rust, and how does it happen?
- How do hot air balloons work?
- Do scarecrows really scare crows? If so, why?
- What other Science, Technology, Engineering and Math connections can you make with *The Wizard of Oz*?

VOCABULARY

Caliginous - Misty; dim; dark.

Wizard: You dare to me for a heart, do you? You clinking, clanking, clattering collection of caliginous junk!

Clumsy - Awkward in movement or action; without skill or grace.

Witch: You dropped your house on my sister? How could anyone be so unbelievably clumsy?

Coroner - An officer, as of a county or municipality, whose chief function is to investigate by inquest, as before a jury, any death not clearly resulting from natural causes.

Coroner: As coroner, I must thoroughly examine her, and she's not only merely dead, she's really most sincerely dead.

County - The largest administration division of a state.

Aunt Em: Almira Gulch, even though you own half of the county, it doesn't mean you have the power to run the rest of us!



Coward - A person who lacks courage in facing danger, difficulty, opposition, pain, etc.; a timid or easily intimidated person.

Lion: You're right, I am a coward! I haven't got any courage at all. Look at the circles under my eyes. I haven't slept in weeks.

Infinite - Immeasurably great.

Professor Marvel: We... we can't do these things without reaching into the infinite.



Menace - A person or thing that is likely to cause harm.

Miss Gulch: That dog's a menace to the community.

Poppies - Any plant of the genus *Papaver*, having showy, usually red flowers.

Lion: I've never seen such beautiful poppies.

Tinsmith - A person who makes or repairs tinware or items of other light metals.

Tin Man: It's empty. The tinsmith forgot to give me a heart.

FUN AND GAMES

Word Search

W	A	E	A	U	N	T	E	M	H	S	C	W	L
I	E	I	R	U	R	D	N	K	Y	A	U	I	C
C	D	U	N	E	U	A	T	E	D	N	N	Z	G
K	K	O	T	T	K	L	K	I	A	I	C	A	E
E	D	A	R	W	Z	N	I	M	D	T	L	R	D
D	W	Y	Y	O	O	M	N	E	N	E	E	D	D
W	A	R	N	M	T	I	U	L	G	M	H	A	N
I	G	B	U	M	T	H	S	T	L	A	E	E	A
T	J	L	U	B	A	I	Y	I	I	I	N	R	L
C	O	J	U	D	Y	O	A	N	N	U	R	N	R
H	N	T	N	W	B	T	R	G	D	Y	Y	R	A
P	N	M	O	S	U	N	A	E	A	C	S	S	G
U	O	K	K	I	N	S	L	I	P	P	E	R	S
C	A	T	M	U	N	C	H	K	I	N	S	O	I

- WIZARD
- MONKEYS
- MUNCHKINS
- UNCLE HENRY
- GLINDA
- TOTO
- SLIPPERS
- GALE
- DOROTHY
- WICKED WITCH
- WATER
- GARLAND
- NIKKO
- JUDY
- AUNT EM
- MELTING
- RUBY
- TIN MAN



The Wizard of Oz Riddles (answers on page 20)

Q: What did the Munchkins sing after the Wicked Witch of the East stole their food and ate it?

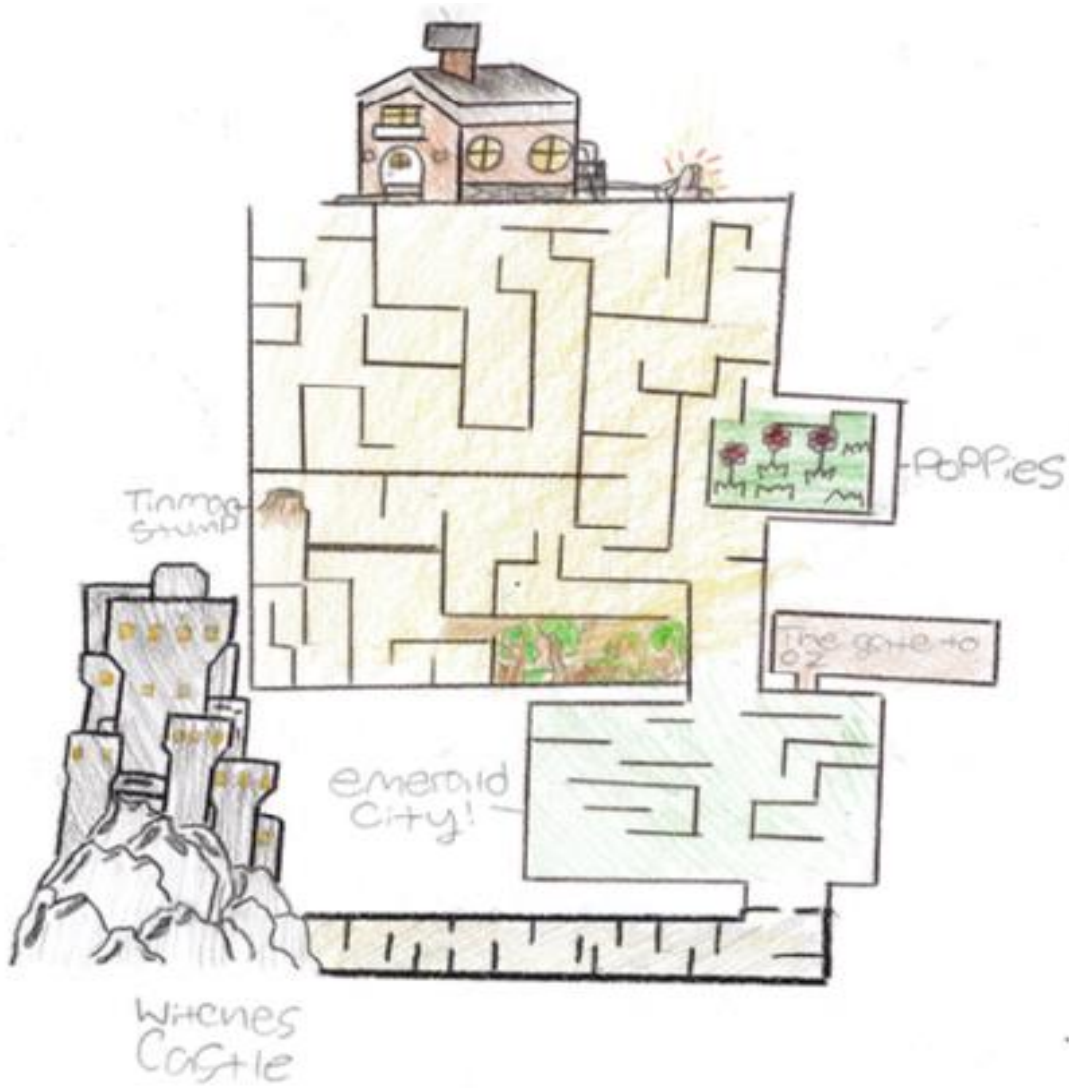
Q: What kind of trees grow in the Emerald City?

Q: How did the Lollipop Guild travel in Munchkinland?

Q: Which of Dorothy's friends had spent a lot of time out in the sun?

Q: Which of Dorothy's friends had to have his mouth washed out with soap?

Oz Maze



Wizard Of Oz Mad Lib

The trouble all starts after Dorothy's dog Toto bites the malicious_____. Dorothy's pleads
(noun)

that he isn't a_____dog, but she doesn't care about that. To make it even worse, a _____ then
(adjective) (noun)

whisks her and Toto away into the Land of Oz, a _____ wonderland, where the Wizard of Oz
(adjective)

is the _____. Dorothy has a _____ named Toto. She gets some _____ when
(occupation) (animal) (color) (plural noun)

she kills one of the _____ Witches. Some Munchkins tell her she needs to find the _____of
(adjective) (job title)

Oz. To reach him, she has to follow a Yellow _____ Road, which she does. Along the way to her
(noun)

destination to see the Wizard, she meets a Scarecrow, a Tin Man, and a_____. The Scarecrow
(animal)

wants a brain, the Tin Man wishes for a _____, and the _____ is dying
(noun) (adjective) (same animal)

for a _____. Plus, Dorothy desires to go back home to _____. They have to get to the
(noun) (place)

Wizard of Oz to _____their wishes.
(verb)

Riddle Answers

Q: What did the Munchkins sing after the Wicked Witch of the East stole their food and ate it?

A: "Ding, Dong, the Witch is fed..."

Q: What kind of trees grow in the Emerald City? A: Evergreens.

Q: How did the Lollipop Guild travel in Munchkinland? A: Down the Yellow Lick Road.

Q: Which of Dorothy's friends had spent a lot of time out in the sun? A: The Tan Man.

Q: Which of Dorothy's friends had to have his mouth washed out with soap? A: The Swearcrow.

SELECTED SOURCES

Fun Facts

<https://www.factinate.com/things/24-behind-scenes-facts-wizard-oz/>

<http://tonsoffacts.com/30-fun-fascinating-facts-wizard-oz/>

<https://www.youtube.com/watch?v=Ztklgx5mVBE>

<https://www.history.com/news/8-things-you-may-not-know-about-the-wizard-of-oz>

Gems

<https://nanotechnology13.imascientist.ie/question/what-makes-rubies-red-and-emeralds-green/>

Hero's Journey

https://en.wikipedia.org/wiki/Hero%27s_journey

Poppies

<http://americanhistory.si.edu/blog/opium-through-wizard-oz>

Rainbows

<https://www.nationalgeographic.org/encyclopedia/rainbow/>

Riddles

<http://wizardofbaum.blogspot.com/2010/09/wizard-of-oz-jokes.html>

THE JUNIOR DRAMATURGS OF THE FRIENDS SCHOOL OF ATLANTA



Back row: Ms. Amy Lighthill, ELA teacher; Kate Fineman, Soren Bonander, Anania Izamumpa
Conan Kelliher, Wisteria Brady, Journey Conley, Barry Stewart Mann, Alliance Teaching Artist
Middle row: Kensley Glenn, Kate Heston, Majority Davis, Sinatra Vaughn, Jonah Tarshis, Avery Armour-Epps, Julia Draper,
Jai Saroha, Cade Owenby, Luca Verduci
Front row: Beck Maxson, Townes Covington, Jackson McGuckin, Bishop Pelot, Fallou Diouf
Not pictured: Katharine Markiewicz