

Alliance Theatre for Youth and Families presents

## AUDIENCE GUIDE

Grades Kindergarten –3rd

# The Wizard of Oz



Book Adaptation by John Kane

Picture Score by Harold Arlen and B.Y. Harburg

Written by L. Frank Baum

With Music and Lyrics by Harold Arlen and B.Y. Harburg

Background Music by Herbert Stothart

Dance and Vocal Arrangements by Peter Howard

Orchestration by Larry Willcox

Adapted by John Kane for the Royal Shakespeare Company

Based upon the classic motion picture owned by Turner Entertainment Co. and distributed in all media  
by Warner Bros.

Directed by Rosemary Newcott

Study guide created by students and teachers participating in the Dramaturgy by Students Program

Alliance Theatre Institute for Educators and Teaching Artists:

Nesbit Elementary 4th grade students, Clairemont Elementary 3rd grade LINKS students  
and Garden Hills Elementary 4th grade students



## A note to educators and parents

This Audience/Study Guide has been prepared by Mrs. Brenda Rogers' Creative Minds 4<sup>th</sup> grade students of Nesbit Elementary, Gwinnett County; Mrs. Cissy Cohen's 4th grade art students at Garden Hills Elementary, Atlanta Public Schools and Nik Philmon's 3rd grade LINKS class of Clairemont Elementary, City Schools of Decatur. These students and partner teachers participated in the Alliance Theatre Institute for Educators and Teaching Artists **Dramaturgy by Students Program** under the guidance of Resident Teaching Artist Kim Bowers-Rheay.

The intent of this Guide is to provide a starting point for further research and reading as the audience prepares and then and reflects together upon the Alliance Theatre for Youth and Families' series production of *The Wizard of Oz*.

The questions, information and activities have been created with the student audience in mind. Please feel free to use/copy any or all of the pages as you reflect with your students about the play "The Wizard of Oz" at the Alliance Theatre.

### Inside this Audience Guide

Folk Art: <i>Wizard of Oz</i> Design Inspiration	1
Time line of the Play Before and After the Play	2
Vocabulary Page: <i>Wizard of Oz</i> Theatre	3
Be a Costume Designer!	4
The Wonderful Word of Oz: Word Scramble	5
Tornado Facts Resources	6

### Bringing *The Wizard of Oz* into the classroom: Theatre to Curriculum Connections

This Audience/Study Guide is targeted for students in grades K-3 with activities which extend knowledge in the core subject of Language Arts and additional knowledge in Life Science . It also provides experiences in the strands of creative thinking, critical thinking, communication and research as well as all levels of Bloom's Taxonomy.

Suggested curriculum areas of study the play covers: standards in Theatre, Language Arts (Vocabulary Development, Grammar), Social Studies (American History, U.S. Geography), Science (Weather, Geography), Visual Arts/Folk Art

Further research on the author of the source material, "The Wonderful Wizard of Oz" by L. Frank Baum, can be found in the Audience Guide for grades 4-8 on the Alliance Theatre Education Website.

Thanks to the High Museum of Art for permission to use several pieces from the permanent Folk Art collection:

#### **Nellie Mae Rowe**

American, 1900–1982

*Peace*, 1978

Crayon and pen on paper

17 x 14 inches

High Museum of Art, Gift of Judith Alexander, 2003.219

#### **Howard Finster**

American, 1916–2001

*Gospel Bike*, #1,776, ca. 1980

Enamel on bicycle

37 x 52 x 26 1/2 inches

High Museum of Art, Norfolk Southern Collection of Self-Taught Art, 1995.174



The Scarecrow

"If I Only Had a Brain!"

Additional thanks to Ms. Dillon-Witter, 4th grade teacher at Nesbit Elementary and Ms. Malever, 4th grade teacher at Garden Hills Elementary.

# Folk Art: Wizard of Oz design inspiration

## What is Folk Art?

Definition: Noun: Art originating among the common people of a nation or region and usually reflecting their traditional culture, especially everyday or festive items produced or decorated by unschooled artists.

**The American Visionary Art Museum in Baltimore gives us a beautifully nuanced answer. “It is art produced by self-taught individuals, usually without formal training, whose work arises from an innate personal vision that revels foremost in the creative act itself.”** Famous Folk Artists are Grandma Moses, Howard Finster, Charlie Lucas Mattie Lou O’Kelley, Dilmus Hall and Bill Traylor

From the Jr. Dramaturgs of Garden Hills Elementary :

Folk art is created by a person who is not formally trained in art. People use their imagination to create folk art using anything they find: found objects, junk, ‘garbage’. They put it together to make something new, colorful, unusual, and different. .

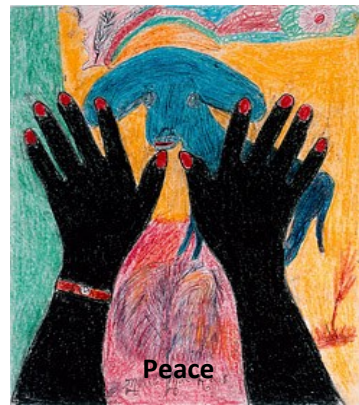
### What Folk Artists’ works can be seen at the High Museum of Art?

- Howard Finster
- Nellie Mae Rowe
- Bill Traylor
- Thornton Dial
- Ulysses Davis
- Sam Doyle



**Gospel Bike**

By Howard Finster  
High Museum



**Peace**

By Nellie Mae Rowe  
High Museum

## An interview with The Wizard of Oz director, Rosemary Newcott, by the Jr. Dramaturgs of Garden Hills Elementary

### Why was Folk Art chosen as the design idea for “The Wizard of Oz”?

The idea grew out of the fact that the Tin Man is actually a piece of “Found Object Art” (i.e. he wears a funnel on his head and his body is composed of tin/metal). Folk Art reflects the vision of “the people” and EVERYONE can create it. The designs also reflect American Folk Art because THE WIZARD OF OZ is an American Folk Tale.

### Why did you choose Wizard of Oz for the play?

It is one of the most beloved works written for young people and is still appreciated by folks of all ages. The film is also a favorite for so many and this play is based on the movie version of Oz.

### How will the costumes reflect Folk Art?

All the costumes are inspired by Folk Art – even Dorothy’s dress looks like it stepped out of a primitive folk art painting – but she will still have ruby slippers. The idea in all design elements is to blend iconic imagery from the MGM film with iconic imagery from American Folk Art.

### Will any of the set design look like Howard Finster’s Paradise Gardens in Summerville, GA?

The set is influenced by the work of Howard Finster and Yes, you will be reminded of Paradise Gardens at times. For instance, you can see bottle trees in Paradise Gardens and you will see Bottle Trees in Oz.

## Timeline of the Play *The Wizard of Oz*

**Work as a group or alone and remember the sequence of events of the play.**

- \_\_\_ Dorothy meets the Scarecrow and he sings "If I Only Had a Brain".
- \_\_\_ The Wizard gives Scarecrow, Tin Man and Lion what they ask for and tries to help Dorothy.
- \_\_\_ Dorothy "Follows the Yellow Brick Road" to find the Wizard of Oz.
- \_\_\_ Dorothy accidentally throws water on the Wicked Witch and melts her.
- \_\_\_ The Flying Monkeys capture Dorothy and take her to the castle of the Wicked Witch.
- \_\_\_ Dorothy Sings "Somewhere Over the Rainbow".
- \_\_\_ The Tornado hits Dorothy's house.
- \_\_\_ Dorothy & her dog Toto, meet Glinda and the Munchkins in the Land of Oz.
- \_\_\_ Glinda tells Dorothy how to get back to Kansas: "Click your heels together 3 times and say, 'There's no place like home.'"
- \_\_\_ Dorothy and the Scarecrow meet the Tin Man and he sings "If I Only Had a Heart".
- \_\_\_ Dorothy and her friends arrive at the Emerald City to see the Wizard.
- \_\_\_ Dorothy's friends come to the castle to rescue her from the Wicked Witch.
- \_\_\_ Dorothy wakes up in her bedroom in Kansas surrounded by family and friends.
- \_\_\_ Dorothy, Scarecrow & Tin Man meet the Lion and he sings "If I Only Had the Nerve".
- \_\_\_ The Wicked Witch of the West meets Dorothy and decides she wants the Ruby Slippers.
- \_\_\_ The Wizard sends Dorothy and her friends to get the broomstick of the Wicked Witch.



**The Tin Man**

**"If I Only Had a Heart"**



The Cowardly Lion

"If I only had the Nerve"

### **Before the play: Questions to prepare the audience**

- What if your experience with *The Wizard of Oz*? Have you seen the movie? Read the book? If yes, what do you remember? Characters, settings, problems, solutions, songs
- How do you think the play will be different from the movie?
- 

### **During the Play: Folk Art Scavenger Hunt**

Look for costumes and designs and decide how Folk Art was used to create them:

Bottle Trees; a roadside sign advertising corn,; bicycle part art that is also 'practical' a crazy quilt; bottle cap eyes.

### **After the play: Time to reflect**

What made you laugh? What part was scary? Why?

Was Dorothy's adventure real or a dream? Why do you think so?

### **Question from the director of *The Wizard of Oz*", Rosemary Newcott:**

What do we learn about HOME and the VALUE OF FRIENDSHIP from studying this story?

### **Reflection Activity:**

Be inspired by the student art throughout this Audience Guide! Draw and write about memorable characters and scenes from the play *The Wizard of Oz* at the Alliance Theatre for Youth and Families.



# *The Wizard of Oz Vocabulary*

Coward	Scared of everything
Emerald	A brilliant color of green
Giddy	Dizzy with excitement
Liquidate	Turn something into liquid
Nerve	Courage or boldness
Pitch	(in Munchkin Song) to tilt, shake or fall
Poppies	Flowers, often associated with sleep
Wizard	A person who practices magic; a sorcerer
Wicked	Evil or morally bad
“Horse of a different color”	Completely different



*Glinda the Good Witch of the South*

“Click your heels together three times....”

## Theatre Vocabulary

- Actor** — A person who acts on stage, film or TV
- Audience** -- People who come to see the performance
- Backdrop** -- A painted canvas which creates a background, setting or scene in the play
- Backstage** -- The area behind and to the sides of the stage
- Choreography** -- Creating sequences of movements into a dance
- Costumes** -- The clothes created for the actors to wear during a performance
- Designer**— A person who creates the designs for the costumes, set or lighting of a play
- Director** -- Leader of a play
- Lyrics** -- Words of a song
- Perform** -- Acting on stage
- Playwright** – A person who writes the play
- Rehearse** -- Practice time for actors and director before the performance
- Script**-- The text of a play
- Stage** -- The raised platform where people perform
- Theatre**— A place to see a play or movie

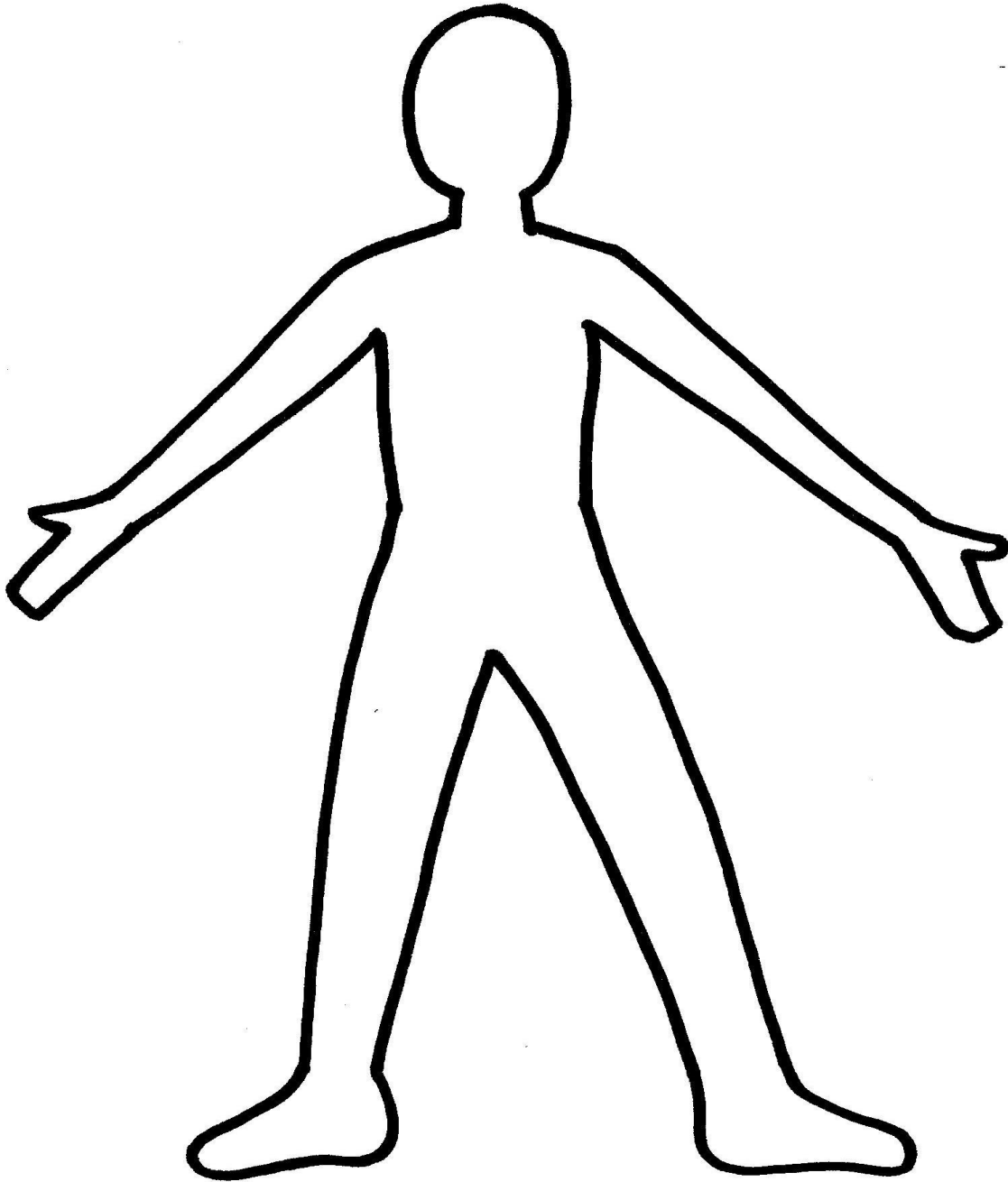


*Wicked Witch of the West*

“I’ll Get you my pretty.  
And your little dog, too!”

**Be a Costume Designer!**

Design a costume for one of the characters from the play *The Wizard of Oz*



Name of Character \_\_\_\_\_

# THE WONDERFUL WORDS of OZ

C W W L Z R A K X U D O L E E  
 N M U N C H K I N L A N D M B  
 S I I V O D Q J V X O U Y E W  
 P S K D W O N N O D R E Y R E  
 F G D H B I C Q A J K R H A J  
 U I L U C C C R I N C U T L Q  
 E N O I L N K K O R I C O D T  
 B O B E N F U M E Z R J R C K  
 I P H B O D G M W D B S O I A  
 D E R R R N A A J I W W D T N  
 S Q E A I P X Z U N O I E Y S  
 I S Z Y T I N M A N L O T A A  
 T I L O Q K J V X W L N A C S  
 W F T N P Q W N F G E Y B T H  
 W O R C E R A C S P Y I N M A

DARK FOREST  
 FLYING MONKEY  
 LION  
 SCARECROW  
 WICKED WITCH

DOROTHY  
 GLINDA  
 MUNCHKIN  
 TINMAN  
 WIZARD

EMERALD CITY  
 KANSAS  
 MUNCHKINLAND  
 TOTO  
 YELLOW BRICK ROAD



Dorothy Gale  
 "There's no place like home"

# Tornadoes, Cyclones and Twisters, oh my!! Dorothy's Big Problem

## Here are some Tornado facts!

- A tornado is a violent rotating column of air that extends downward from a thunderstorm to the ground.
- The most violent tornadoes boast winds of up to 300 mph and can spin up to 1,000 times a minute .
- A tornado can leave a path more than a mile wide, and up to 50 miles long.
- In an average year, over 800 tornadoes are reported across the United States.
- Tornadoes are also known as twisters or cyclones
- Tornadoes occur all over the world, but are prevalent in the United States. Specifically, the combination of the Rocky Mountains to the west and the Gulf of Mexico to the south make the Central Plains of the Midwestern United States a prime region for the formation of tornadoes.  
It is for this reason that the area, including Kansas, is referred to as 'Tornado Alley'.



## Discussion questions

**Before the show:** Have you ever been in or near a tornado?  
Have you ever been in a big storm? What should you do when a tornado is approaching?

**After the show:** How did the play show the tornado? What did the characters do when the tornado happened?  
What happened to Dorothy during the tornado?

## Resources

### Books:

Aljean Harmetz. The Making of the Wizard of Oz; Alfred A. Knopf: NY, 1977

The Annotated Wizard of Oz – Centennial Edition; L. Frank Baum, edited with and introduction and notes by Michael Patrick Hearn.

Johnson, Richard, Illustrator, Geraldine Taylor, Education Consultant The Wizard of Oz ; Ladybird Books, Ltd.: London ,2010

Evangelista, Mauro, Illustrator, Retold by Rosie Dickins The Wizard of Oz ; Usborne Publishing, Ltd.; London : 2010

### Videos/DVD

The Wizard of Oz 78 minute Animated movie Paramount pictures : 1983

### Websites:

<http://www.funtrivia.com/en/Movies/Wizard-of-Oz-841.html>

[http://en.wikipedia.org/wiki/The\\_Wizard\\_of\\_Oz\\_\(1902\\_musical\)#Conception\\_and\\_script](http://en.wikipedia.org/wiki/The_Wizard_of_Oz_(1902_musical)#Conception_and_script)



**Munchkin**

**“Follow the Yellow Brick Road”**